

# Sale or Lease



*1302 Osage/2008 Rosina St*

**Call George Jimenez (505) 216-1501**

## *For SALE \$749,000*

- ❖ 1302 Osage Ave/2008 Rosina St (One Building)
- ❖ 5676 Sq Ft Building
- ❖ Retail and Office spaces
- ❖ Zoned C-1
- ❖ Shared Common Wall
- ❖ Paved parking
- ❖ Next to Cerrillos Rd.



## *For LEASE*

- ❖ Single Office with shared waiting area and Bathrooms (two each available) \$175/Month
- ❖ Three Offices with large reception and waiting area with rear and break/work area with sink, \$750/month
- ❖ Three large private offices with conference area, storage, private bathroom and storage area. \$1275/Month

Long term lease incentives available or short term move in specials quoted above.

## *Offered By:*

**COMMERCIAL PROPERTIES  
INC.**

2019 GALISTEO ST. STE L-1  
SANTA FE, NEW MEXICO  
505 988 8081

Web: [www.cpi-nm](http://www.cpi-nm)

MLS: 905520

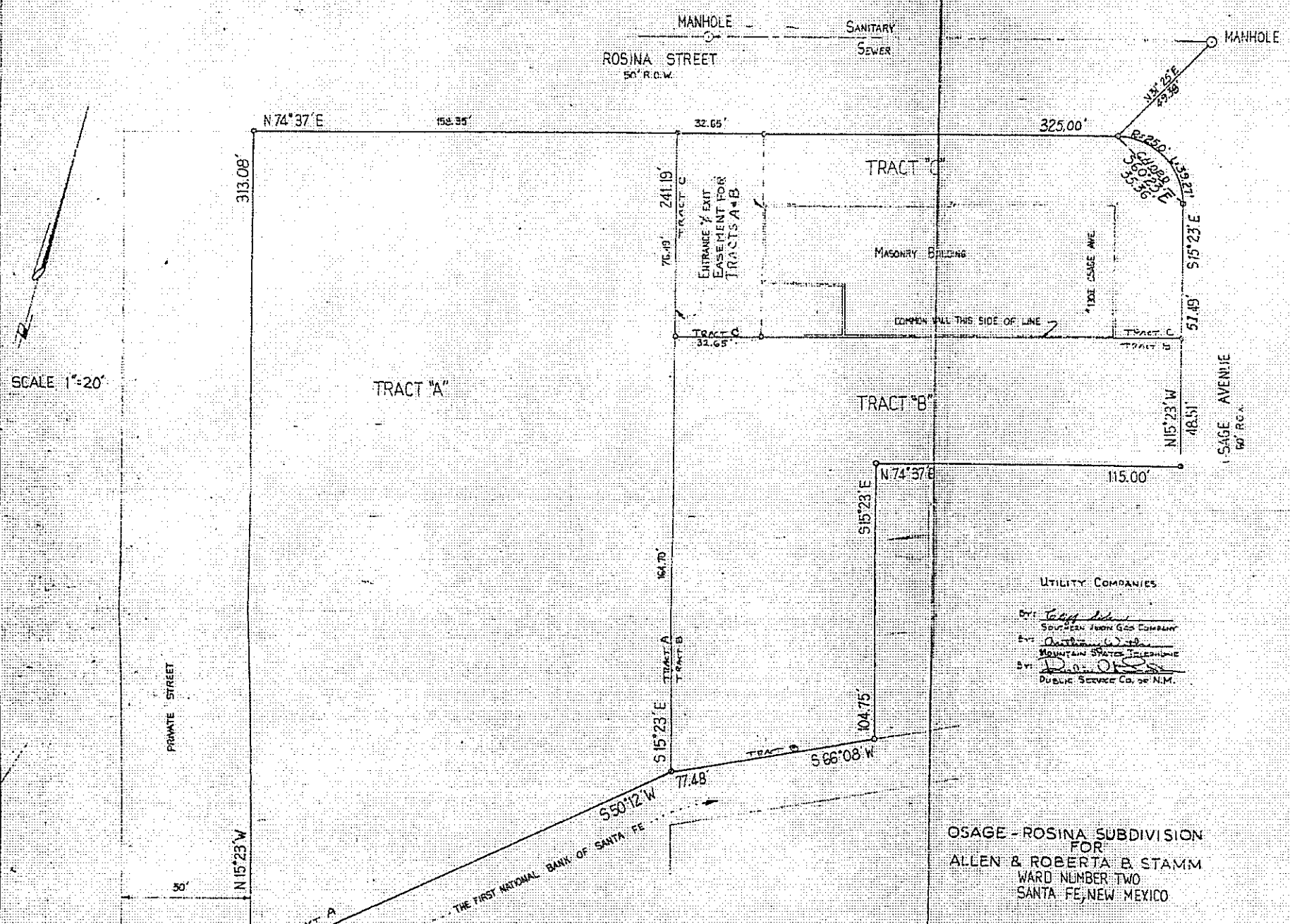












**DEDICATION**

WHEREAS ALL MEN BY THEIR PRESENTS THAT ALLEN & ROBERTA B. STAMM HAVE MADE A RECORD OF THE HEREIN DESCRIBED LOTS AND TRACTS WITH NEIGHBORING LOTS AND TRACTS OF THE OSAGE - ROSINA SUBDIVISION IN WARD NUMBER TWO OF THE CITY OF SANTA FE, NEW MEXICO, BY DEED DATED AND RECORDED IN THE PUBLIC RECORDS OF THE COUNTY OF SANTA FE, NEW MEXICO, AS FOLLOWS:

**OSAGE - ROSINA SUBDIVISION**

THEY HAVE ACQUIRED BY DEED DATED AND RECORDED IN THE PUBLIC RECORDS OF THE COUNTY OF SANTA FE, NEW MEXICO, THE INTEREST IN THE SEVERAL LOTS AND TRACTS OF THE OSAGE - ROSINA SUBDIVISION, WARD NUMBER TWO, CITY OF SANTA FE, NEW MEXICO, AS FOLLOWS: TRACT A, TRACT B, TRACT C, TRACT D, TRACT E, TRACT F, TRACT G, TRACT H, TRACT I, TRACT J, TRACT K, TRACT L, TRACT M, TRACT N, TRACT O, TRACT P, TRACT Q, TRACT R, TRACT S, TRACT T, TRACT U, TRACT V, TRACT W, TRACT X, TRACT Y, TRACT Z, TRACT AA, TRACT AB, TRACT AC, TRACT AD, TRACT AE, TRACT AF, TRACT AG, TRACT AH, TRACT AI, TRACT AJ, TRACT AK, TRACT AL, TRACT AM, TRACT AN, TRACT AO, TRACT AP, TRACT AQ, TRACT AR, TRACT AS, TRACT AT, TRACT AU, TRACT AV, TRACT AW, TRACT AX, TRACT AY, TRACT AZ, TRACT BA, TRACT BB, TRACT BC, TRACT BD, TRACT BE, TRACT BF, TRACT BG, TRACT BH, TRACT BI, TRACT BJ, TRACT BK, TRACT BL, TRACT BM, TRACT BN, TRACT BO, TRACT BP, TRACT BQ, TRACT BR, TRACT BS, TRACT BT, TRACT BU, TRACT BV, TRACT BW, TRACT BX, TRACT BY, TRACT BZ, TRACT CA, TRACT CB, TRACT CC, TRACT CD, TRACT CE, TRACT CF, TRACT CG, TRACT CH, TRACT CI, TRACT CJ, TRACT CK, TRACT CL, TRACT CM, TRACT CN, TRACT CO, TRACT CP, TRACT CQ, TRACT CR, TRACT CS, TRACT CT, TRACT CU, TRACT CV, TRACT CW, TRACT CX, TRACT CY, TRACT CZ, TRACT DA, TRACT DB, TRACT DC, TRACT DD, TRACT DE, TRACT DF, TRACT DG, TRACT DH, TRACT DI, TRACT DJ, TRACT DK, TRACT DL, TRACT DM, TRACT DN, TRACT DO, TRACT DP, TRACT DQ, TRACT DR, TRACT DS, TRACT DT, TRACT DU, TRACT DV, TRACT DW, TRACT DX, TRACT DY, TRACT DZ, TRACT EA, TRACT EB, TRACT EC, TRACT ED, TRACT EE, TRACT EF, TRACT EG, TRACT EH, TRACT EI, TRACT EJ, TRACT EK, TRACT EL, TRACT EM, TRACT EN, TRACT EO, TRACT EP, TRACT EQ, TRACT ER, TRACT ES, TRACT ET, TRACT EU, TRACT EV, TRACT EW, TRACT EX, TRACT EY, TRACT EZ, TRACT FA, TRACT FB, TRACT FC, TRACT FD, TRACT FE, TRACT FF, TRACT FG, TRACT FH, TRACT FI, TRACT FJ, TRACT FK, TRACT FL, TRACT FM, TRACT FN, TRACT FO, TRACT FP, TRACT FQ, TRACT FR, TRACT FS, TRACT FT, TRACT FU, TRACT FV, TRACT FW, TRACT FX, TRACT FY, TRACT FZ, TRACT GA, TRACT GB, TRACT GC, TRACT GD, TRACT GE, TRACT GF, TRACT GG, TRACT GH, TRACT GI, TRACT GJ, TRACT GK, TRACT GL, TRACT GM, TRACT GN, TRACT GO, TRACT GP, TRACT GQ, TRACT GR, TRACT GS, TRACT GT, TRACT GU, TRACT GV, TRACT GW, TRACT GX, TRACT GY, TRACT GZ, TRACT HA, TRACT HB, TRACT HC, TRACT HD, TRACT HE, TRACT HF, TRACT HG, TRACT HH, TRACT HI, TRACT HJ, TRACT HK, TRACT HL, TRACT HM, TRACT HN, TRACT HO, TRACT HP, TRACT HQ, TRACT HR, TRACT HS, TRACT HT, TRACT HU, TRACT HV, TRACT HW, TRACT HX, TRACT HY, TRACT HZ, TRACT IA, TRACT IB, TRACT IC, TRACT ID, TRACT IE, TRACT IF, TRACT IG, TRACT IH, TRACT II, TRACT IJ, TRACT IK, TRACT IL, TRACT IM, TRACT IN, TRACT IO, TRACT IP, TRACT IQ, TRACT IR, TRACT IS, TRACT IT, TRACT IU, TRACT IV, TRACT IW, TRACT IX, TRACT IY, TRACT IZ, TRACT JA, TRACT JB, TRACT JC, TRACT JD, TRACT JE, TRACT JF, TRACT JG, TRACT JH, TRACT JI, TRACT JJ, TRACT JK, TRACT JL, TRACT JM, TRACT JN, TRACT JO, TRACT JP, TRACT JQ, TRACT JR, TRACT JS, TRACT JT, TRACT JU, TRACT JV, TRACT JW, TRACT JX, TRACT JY, TRACT JZ, TRACT KA, TRACT KB, TRACT KC, TRACT KD, TRACT KE, TRACT KF, TRACT KG, TRACT KH, TRACT KI, TRACT KJ, TRACT KK, TRACT KL, TRACT KM, TRACT KN, TRACT KO, TRACT KP, TRACT KQ, TRACT KR, TRACT KS, TRACT KT, TRACT KU, TRACT KV, TRACT KW, TRACT KX, TRACT KY, TRACT KZ, TRACT LA, TRACT LB, TRACT LC, TRACT LD, TRACT LE, TRACT LF, TRACT LG, TRACT LH, TRACT LI, TRACT LJ, TRACT LK, TRACT LL, TRACT LM, TRACT LN, TRACT LO, TRACT LP, TRACT LQ, TRACT LR, TRACT LS, TRACT LT, TRACT LU, TRACT LV, TRACT LW, TRACT LX, TRACT LY, TRACT LZ, TRACT MA, TRACT MB, TRACT MC, TRACT MD, TRACT ME, TRACT MF, TRACT MG, TRACT MH, TRACT MI, TRACT MJ, TRACT MK, TRACT ML, TRACT MM, TRACT MN, TRACT MO, TRACT MP, TRACT MQ, TRACT MR, TRACT MS, TRACT MT, TRACT MU, TRACT MV, TRACT MW, TRACT MX, TRACT MY, TRACT MZ, TRACT NA, TRACT NB, TRACT NC, TRACT ND, TRACT NE, TRACT NF, TRACT NG, TRACT NH, TRACT NI, TRACT NJ, TRACT NK, TRACT NL, TRACT NM, TRACT NO, TRACT NP, TRACT NQ, TRACT NR, TRACT NS, TRACT NT, TRACT NU, TRACT NV, TRACT NW, TRACT NX, TRACT NY, TRACT NZ, TRACT OA, TRACT OB, TRACT OC, TRACT OD, TRACT OE, TRACT OF, TRACT OG, TRACT OH, TRACT OI, TRACT OJ, TRACT OK, TRACT OL, TRACT OM, TRACT ON, TRACT OO, TRACT OP, TRACT OQ, TRACT OR, TRACT OS, TRACT OT, TRACT OU, TRACT OV, TRACT OW, TRACT OX, TRACT OY, TRACT OZ, TRACT PA, TRACT PB, TRACT PC, TRACT PD, TRACT PE, TRACT PF, TRACT PG, TRACT PH, TRACT PI, TRACT PJ, TRACT PK, TRACT PL, TRACT PM, TRACT PN, TRACT PO, TRACT PP, TRACT PQ, TRACT PR, TRACT PS, TRACT PT, TRACT PU, TRACT PV, TRACT PW, TRACT PX, TRACT PY, TRACT PZ, TRACT QA, TRACT QB, TRACT QC, TRACT QD, TRACT QE, TRACT QF, TRACT QG, TRACT QH, TRACT QI, TRACT QJ, TRACT QK, TRACT QL, TRACT QM, TRACT QN, TRACT QO, TRACT QP, TRACT QQ, TRACT QR, TRACT QS, TRACT QT, TRACT QU, TRACT QV, TRACT QW, TRACT QX, TRACT QY, TRACT QZ, TRACT RA, TRACT RB, TRACT RC, TRACT RD, TRACT RE, TRACT RF, TRACT RG, TRACT RH, TRACT RI, TRACT RJ, TRACT RK, TRACT RL, TRACT RM, TRACT RN, TRACT RO, TRACT RP, TRACT RQ, TRACT RR, TRACT RS, TRACT RT, TRACT RU, TRACT RV, TRACT RW, TRACT RX, TRACT RY, TRACT RZ, TRACT SA, TRACT SB, TRACT SC, TRACT SD, TRACT SE, TRACT SF, TRACT SG, TRACT SH, TRACT SI, TRACT SJ, TRACT SK, TRACT SL, TRACT SM, TRACT SN, TRACT SO, TRACT SP, TRACT SQ, TRACT SR, TRACT SS, TRACT ST, TRACT SU, TRACT SV, TRACT SW, TRACT SX, TRACT SY, TRACT SZ, TRACT TA, TRACT TB, TRACT TC, TRACT TD, TRACT TE, TRACT TF, TRACT TG, TRACT TH, TRACT TI, TRACT TJ, TRACT TK, TRACT TL, TRACT TM, TRACT TN, TRACT TO, TRACT TP, TRACT TQ, TRACT TR, TRACT TS, TRACT TU, TRACT TV, TRACT TW, TRACT TX, TRACT TY, TRACT TZ, TRACT UA, TRACT UB, TRACT UC, TRACT UD, TRACT UE, TRACT UF, TRACT UG, TRACT UH, TRACT UI, TRACT UJ, TRACT UK, TRACT UL, TRACT UM, TRACT UN, TRACT UO, TRACT UP, TRACT UQ, TRACT UR, TRACT US, TRACT UT, TRACT UY, TRACT UZ, TRACT VA, TRACT VB, TRACT VC, TRACT VD, TRACT VE, TRACT VF, TRACT VG, TRACT VH, TRACT VI, TRACT VJ, TRACT VK, TRACT VL, TRACT VM, TRACT VN, TRACT VO, TRACT VP, TRACT VQ, TRACT VR, TRACT VS, TRACT VT, TRACT VY, TRACT VZ, TRACT WA, TRACT WB, TRACT WC, TRACT WD, TRACT WE, TRACT WF, TRACT WG, TRACT WH, TRACT WI, TRACT WJ, TRACT WK, TRACT WL, TRACT WM, TRACT WN, TRACT WO, TRACT WP, TRACT WQ, TRACT WR, TRACT WS, TRACT WT, TRACT WY, TRACT WZ, TRACT XA, TRACT XB, TRACT XC, TRACT XD, TRACT XE, TRACT XF, TRACT XG, TRACT XH, TRACT XI, TRACT XJ, TRACT XK, TRACT XL, TRACT XM, TRACT XN, TRACT XO, TRACT XP, TRACT XQ, TRACT XR, TRACT XS, TRACT XT, TRACT XU, TRACT XV, TRACT XW, TRACT XX, TRACT XY, TRACT XZ, TRACT YA, TRACT YB, TRACT YC, TRACT YD, TRACT YE, TRACT YF, TRACT YG, TRACT YH, TRACT YI, TRACT YJ, TRACT YK, TRACT YL, TRACT YM, TRACT YN, TRACT YO, TRACT YP, TRACT YQ, TRACT YR, TRACT YS, TRACT YT, TRACT YU, TRACT YV, TRACT YW, TRACT YX, TRACT YY, TRACT YZ, TRACT ZA, TRACT ZB, TRACT ZC, TRACT ZD, TRACT ZE, TRACT ZF, TRACT ZG, TRACT ZH, TRACT ZI, TRACT ZJ, TRACT ZK, TRACT ZL, TRACT ZM, TRACT ZN, TRACT ZO, TRACT ZP, TRACT ZQ, TRACT ZR, TRACT ZS, TRACT ZT, TRACT ZU, TRACT ZV, TRACT ZW, TRACT ZX, TRACT ZY, TRACT ZZ.

BY ALLEN STAMM

ROBERTA B. STAMM

STATE OF NEW MEXICO

COUNTY OF SANTA FE

THE FOREGOING DEDICATION ACKNOWLEDGED BEFORE ME ON THIS 12th DAY OF Sept 1968

MY COMMISSION EXPIRES May 13, 1971

Allen B. Alessandro

NOTARY PUBLIC

**AFFIDAVIT:**

THIS SUBDIVISION LIES WITHIN THE PLANNING AND PLATTING JURISDICTION OF THE CITY OF SANTA FE, NEW MEXICO.

BY: Allen Stamm, Robert B. Stamm

ATTEST BY NOTARY PUBLIC

Allen B. Alessandro, May 13, 1971

DATE NAME COMMISSION EXPIRES

CITY OF SANTA FE, NEW MEXICO

APPROVED ON Oct 11, 1968

APPROVED ON Oct 10, 1968

APPROVED BY THE CITY PLANNING COMMISSION AT ITS MEETING OF

ILGOTT, Margaret, Kenneth Black

DATE SECRETARY CHAIRMAN

**CERTIFICATE**

I HEREBY CERTIFY THAT THIS PLAT IS AN ACCURATE DELINEATION OF OFFICE COMPUTATIONS BASED ON A FIELD SURVEY BY GUY D. HAYDEN, 7 JULY 1966.

HAYDEN SURVEYS

DATED Sept 13, 1968

CL Brown

M.H.D.E./L.S. N.M.

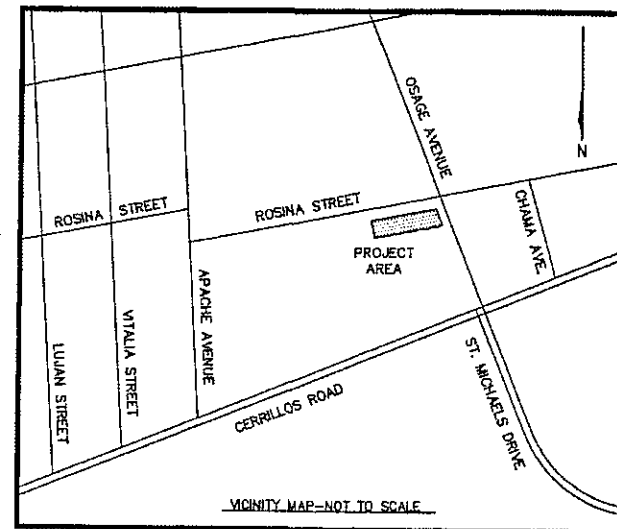
NOTARY PUBLIC

Allen B. Alessandro

DATE

Plat of Survey Prepared for  
The Lawrence E. Irell Revocable Trust  
and  
M3 Company LLC

RESURVEY OF TRACT "C", OF THE OSAGE-ROSINA SUBDIVISION  
AS FILED IN PLAT BOOK 18, PAGE 24, AS DOCUMENT NO. 312,109  
LYING WITHIN THE SANTA FE GRANT, PROJECTED NW1/4 SECTION 34, T17N, R9E, NMPM  
LOCATED AT 1302 OSAGE AVENUE, CITY OF SANTA FE  
COUNTY OF SANTA FE, STATE OF NEW MEXICO, U.S.A.



CITY OF SANTA FE PUBLIC NOTICE

THIS SURVEY IS BASED ON THOSE RECORDED DOCUMENTS NOTED HEREON. CITY OF SANTA FE STAFF MUST APPROVE ALL DOCUMENTS SUBMITTED WITH AN APPLICATION FOR A BUILDING PERMIT AND MAY REQUIRE ADDITIONAL DOCUMENTATION TO PROVE LEGAL LOT OF RECORD.

SUPPLEMENTAL CERTIFICATION

I FURTHER CERTIFY AS TO THE EXISTENCE OF THE FOLLOWING ON THE DATE OF THIS FIELD SURVEY:

- EVIDENCE OF RIGHTS OF WAY, OLD HIGHWAYS OR ABANDONED ROADS, LANES, TRAILS OR DRIVEWAYS, SEWER DRAINS, WATER, GAS OR OIL PIPELINES ON OR CROSSING SUBJECT PREMISES:  
ASPHALT DRIVEWAY CROSSES TRACT "C" WITHIN EASEMENT TO SERVE TRACT "B". (SEE SHEET NO. 2).
- SPRINGS, STREAMS, RIVERS, PONDS OR LAKES LOCATED, BORDERING ON OR THROUGH SUBJECT PREMISES:  
NONE VISIBLE.
- EVIDENCE OF CEMETERIES OR FAMILY BURIAL GROUNDS LOCATED ON SUBJECT PREMISES:  
NONE VISIBLE.
- OVERHEAD UTILITY POLES, ANCHORS, PEDESTALS, WIRES OR LINES OVERHANGING OR CROSSING SUBJECT PREMISES AND SERVING OTHER PROPERTIES:  
GAS METERS AND ELECTRIC METERS W/OVERHEAD UTILITY LINES LOCATED ALONG SE CORNER OF TRACT "C". WATER METER LOCATED ALONG EASTERLY PORTION OF TRACT "C". (PLEASE SEE ATTACHED SHEET NO. 2).
- JOINT DRIVEWAYS OR WALKWAYS, JOINT GARAGES, PARTY WALLS OR RIGHTS OF SUPPORT, STEPS OR ROOFS IN COMMON OR JOINTS GARAGES:  
SUBJECT BUILDING HAS WALL IN COMMON WITH ADJOINING BUILDING TO SOUTH. (SEE SHEET NO. 2).
- APPARENT ENCROACHMENTS OF BUILDINGS, PROJECTIONS, CORNICES OR SIGNS AFFIXED THERETO, FENCES OR OTHERS INDICATIONS OF OCCUPANCY APPEAR TO ENCROACH UPON OR OVERHANG SUBJECT PROPERTY:  
NONE VISIBLE.
- SPECIFIC PHYSICAL EVIDENCE OF BOUNDARY LINES ON ALL SIDES:  
PROPERTY CORNER MONUMENTS FOUND AS NOTED ON ATTACHED SHEET NO. 2.
- IS THE PROPERTY IMPROVED ? IF STRUCTURE APPEARS TO ENCROACH OR APPEARS TO VIOLATE SETBACK LINES:  
PROPERTY IS IMPROVED: DOES NOT VIOLATE SETBACKS.
- INDICATIONS OF RECENT BUILDING CONSTRUCTION, ALTERATIONS OR REPAIRS:  
NONE VISIBLE.
- APPROXIMATE DISTANCES OF STRUCTURES FROM AT LEAST TWO LOT LINES MUST BE SHOWN:  
PLEASE SEE ATTACHED SHEET NO. 2.

SURVEYORS CERTIFICATION

I, PAUL A. ARMIJO, CERTIFY THAT I AM A REGISTERED PROFESSIONAL SURVEYOR AND THAT THIS PLAT WAS PREPARED BY ME OR UNDER MY DIRECTION AND IS BASED ON AN ACTUAL FIELD SURVEY PERFORMED UNDER MY DIRECTION IN JANUARY 2000 AND IS, TO THE BEST OF MY KNOWLEDGE AND BELIEF, CORRECT AND CONFORMS TO THE MINIMUM REQUIREMENTS OF THE STANDARDS FOR LAND SURVEYS IN NEW MEXICO AS ADOPTED BY THE NEW MEXICO STATE BOARD OF REGISTRATION FOR PROFESSIONAL ENGINEERS AND PROFESSIONAL SURVEYORS

I FURTHER CERTIFY THAT THIS SURVEY IS NOT A LAND DIVISION OR SUBDIVISION AS DEFINED IN THE NEW MEXICO SUBDIVISION ACT AND THAT THIS IS A BOUNDARY SURVEY PLAT OF AN EXISTING TRACT OR TRACTS.

*Paul A. Armijo* JAN. 19, 2000  
PAUL A. ARMIJO, N.M.P.S. NO. 13604



DOCUMENTS OF REFERENCE

NOTE: RECORDING DATA SHOWN BELOW REFERS TO OFFICE OF SANTA FE COUNTY CLERK

- OSAGE-ROSINA SUBDIVISION FOR ALLEN & ROBERTA STAMM, WARD NO. TWO, SANTA FE, NEW MEXICO, BY C. L. BROWN NMPE & LS NO. 1231, DATED SEPTEMBER 13, 1968, FILED ON OCTOBER 14, 1968, IN PLAT BOOK 18, PAGE 24, AS DOCUMENT NO. 312,109.
- WARRANTY DEED-TRACT "C": OSAGE INVESTORS TO LAWRENCE E. IRELL, FILED IN MISC. BOOK 347, PAGE 959.

NOTES--SHEET 1

- SEE SHEET NO. 2 FOR PLAT MAP.
- SFC ASSESSOR UPC NO. FOR THIS PROPERTY: 1-052-097-144-383.
- COMMITMENT FOR TITLE INSURANCE ON THIS PROPERTY ISSUED BY: TERRITORIAL ABSTRACT & TITLE CO., INC. FILE NO. 0001071 BT.
- DATA SHOWN ON ADJOINING PROPERTIES IS BACKGROUND OR INFORMATIONAL IN NATURE AND IS NOT A SURVEY OF ADJOINING PROPERTIES.
- THIS PROPERTY DOES NOT LIE WITHIN THE 100 YEAR FLOOD HAZARD ZONE AS SHOWN ON FEDERAL EMERGENCY MANAGEMENT AGENCY, FLOOD INSURANCE RATE MAP COMMUNITY PANEL NO. 350070 0007 B, DATED JULY 2, 1980.
- DATE OF FIELD SURVEY: JANUARY 12, 2000.
- THIS PROPERTY IS SUBJECT TO ALL EASEMENTS, RESTRICTIONS, AND RESERVATIONS RECORDED OR UNRECORDED.

INDEXING INFORMATION FOR COUNTY CLERK
OWNER: THE LAWRENCE E. IRELL REVOCABLE TRUST
LOCATION: TRACT "C", OSAGE-ROSINA SUBDIVISION PLAT BK. 18, PG. 24 1302 OSAGE AVENUE, CITY SF SANTA FE COUNTY, NM

SHEET 1 OF 2

Document No. 1103-450

COUNTY CLERKS INSTRUMENT BLOCK  
COUNTY OF SANTA FE, STATE OF NEW MEXICO

I hereby certify that this instrument was filed for record on the 19 day of Jan A.D. 2000 at 8:10 o'clock a.m. and was duly recorded in Book 432, Page 1147 of the Records of Santa Fe County

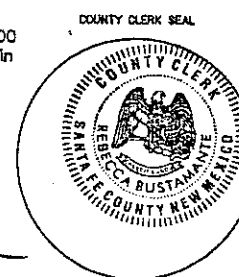
Witness my Hand and Seal of Office

REBECCA BUSTAMANTE

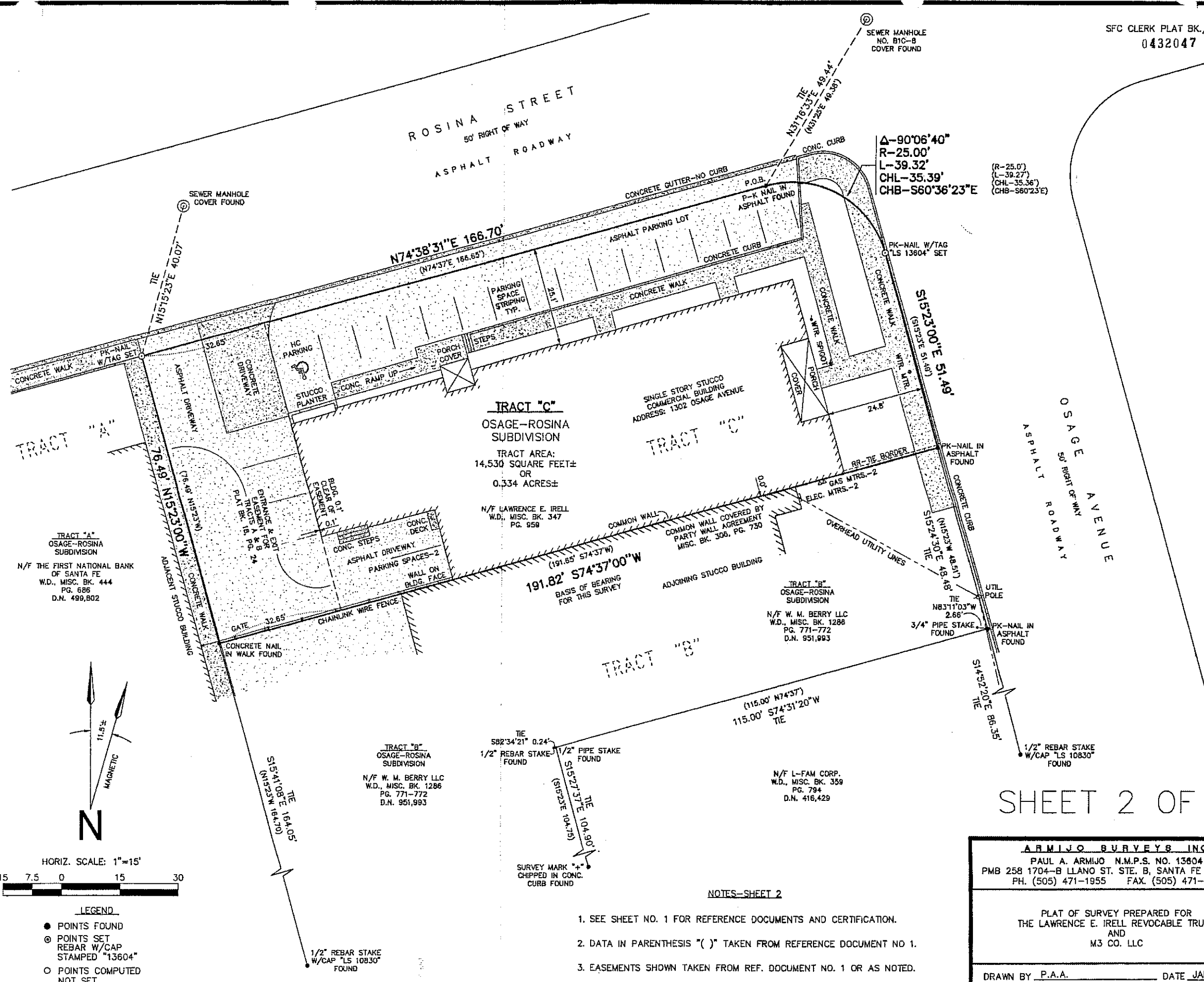
County Clerk, Santa Fe County, New Mexico

DEPUTY

*Kim Bauer*



<b>ARMIJO SURVEYS INC.</b>	
PAUL A. ARMIJO N.M.P.S. NO. 13604 PMB 258 1704-B LLANO ST. STE. B, SANTA FE NM 87505 PH. (505) 471-1955 FAX. (505) 471-1925	
PLAT OF SURVEY PREPARED FOR THE LAWRENCE E. IRELL REVOCABLE TRUST AND M3 CO. LLC	
DRAWN BY <u>P.A.A.</u>	DATE <u>JAN. 2000</u>
JOB No. <u>2001009</u>	SHEET No. <u>1 OF 2</u>

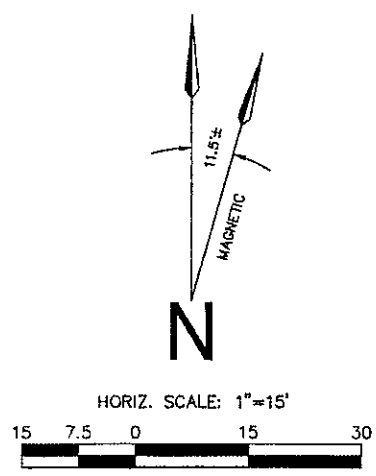


TRACT "A"  
OSAGE-ROSINA  
SUBDIVISION  
N/F THE FIRST NATIONAL BANK  
OF SANTA FE  
W.D., MISC. BK. 444  
PG. 686  
D.N. 499,802

TRACT "C"  
OSAGE-ROSINA  
SUBDIVISION  
TRACT AREA:  
14,530 SQUARE FEET±  
OR  
0.334 ACRES±  
N/F LAWRENCE E. IRELL  
W.D., MISC. BK. 347  
PG. 959

TRACT "B"  
OSAGE-ROSINA  
SUBDIVISION  
N/F W. M. BERRY LLC  
W.D., MISC. BK. 1286  
PG. 771-772  
D.N. 951,993

N/F L-FAM CORP.  
W.D., MISC. BK. 359  
PG. 794  
D.N. 416,429



- LEGEND**
- POINTS FOUND
  - ⊙ POINTS SET  
REBAR W/CAP  
STAMPED "13604"
  - POINTS COMPUTED  
NOT SET

TRACT "B"  
OSAGE-ROSINA  
SUBDIVISION  
N/F W. M. BERRY LLC  
W.D., MISC. BK. 1286  
PG. 771-772  
D.N. 951,993

- NOTES-SHEET 2**
1. SEE SHEET NO. 1 FOR REFERENCE DOCUMENTS AND CERTIFICATION.
  2. DATA IN PARENTHESIS "( )" TAKEN FROM REFERENCE DOCUMENT NO. 1.
  3. EASEMENTS SHOWN TAKEN FROM REF. DOCUMENT NO. 1 OR AS NOTED.

# SHEET 2 OF 2

**ARMJO SURVEYS INC.**  
PAUL A. ARMJO N.M.P.S. NO. 13804  
PMB 258 1704-B LLANO ST. STE. B, SANTA FE NM 87505  
PH. (505) 471-1955 FAX. (505) 471-1925

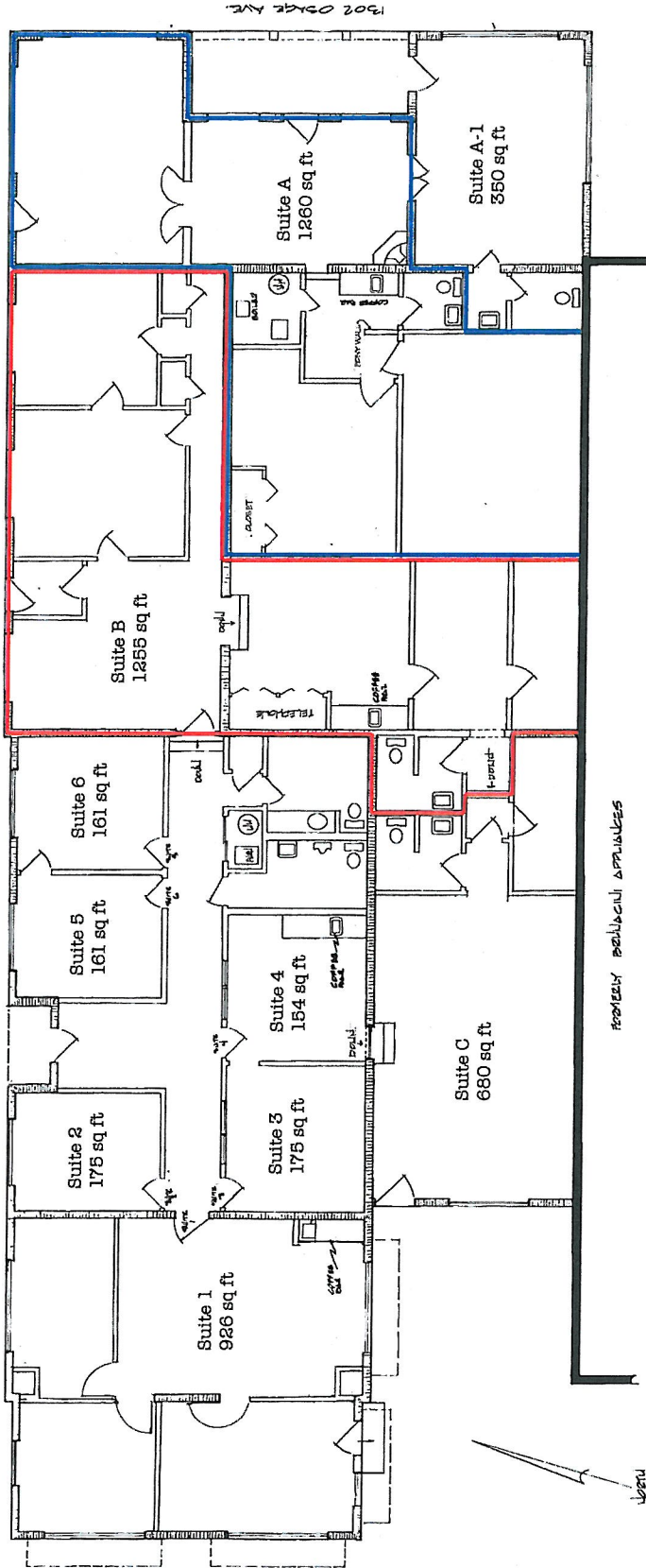
---

PLAT OF SURVEY PREPARED FOR  
THE LAWRENCE E. IRELL REVOCABLE TRUST  
AND  
M3 CO. LLC

---

DRAWN BY P.A.A. DATE JAN. 2000  
JOB No. 2001009 SHEET No. 2 OF 2

1008 ROSINA ST.



SCALE 1/4" = 1'-0"

THE OSAGE BUILDING  
 1302 OSAGE AVENUE  
 SHELBY COUNTY, MISSOURI  
 DRAWN BY: J. L. BROWN  
 DATE: 7-22-79