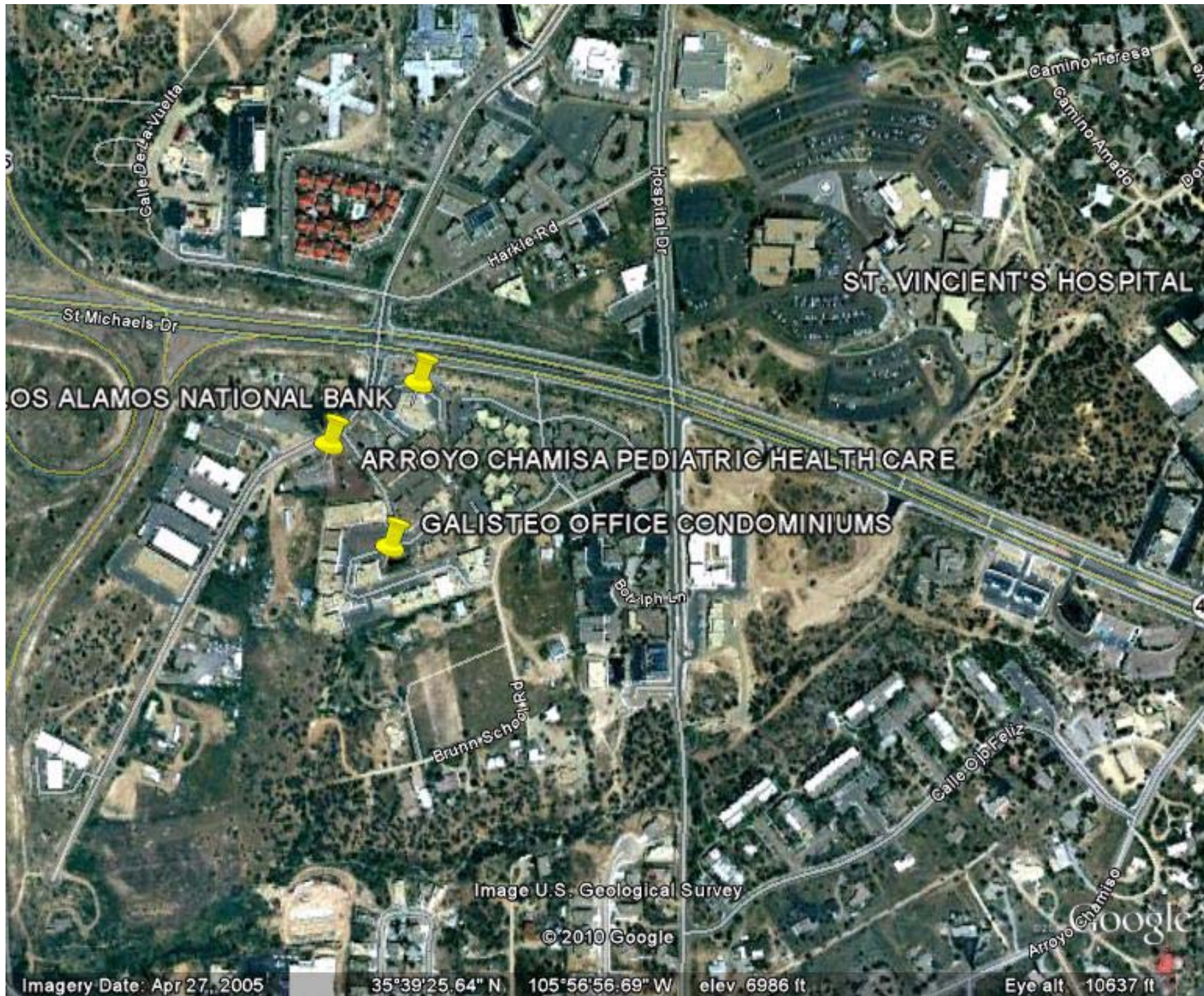




OFFICE CONDOMINIUM (FOR SALE with LEASE BACK POSSIBLE)

- LOCATION:** 2019 Galisteo St., Suite M-1, Santa Fe, NM 87505
- ZONING:** C-1 (office and office related uses)
- SQ.FT.:** 4,428
- SALE PRICE:** \$863,070 (\$195.00 a sq.ft.)
- DESCRIPTION:** 19 offices, extra large conference area, 3 baths (one with shower), large reception area, coffee bar, server room, copy room.
- OTHER:** Owner prefers to cash. . One of the nicest office complexes in Santa Fe. Existing tenant, Louis Berger, has leased for 5 years and is interested in continue to lease with square feet to be about 1,736.

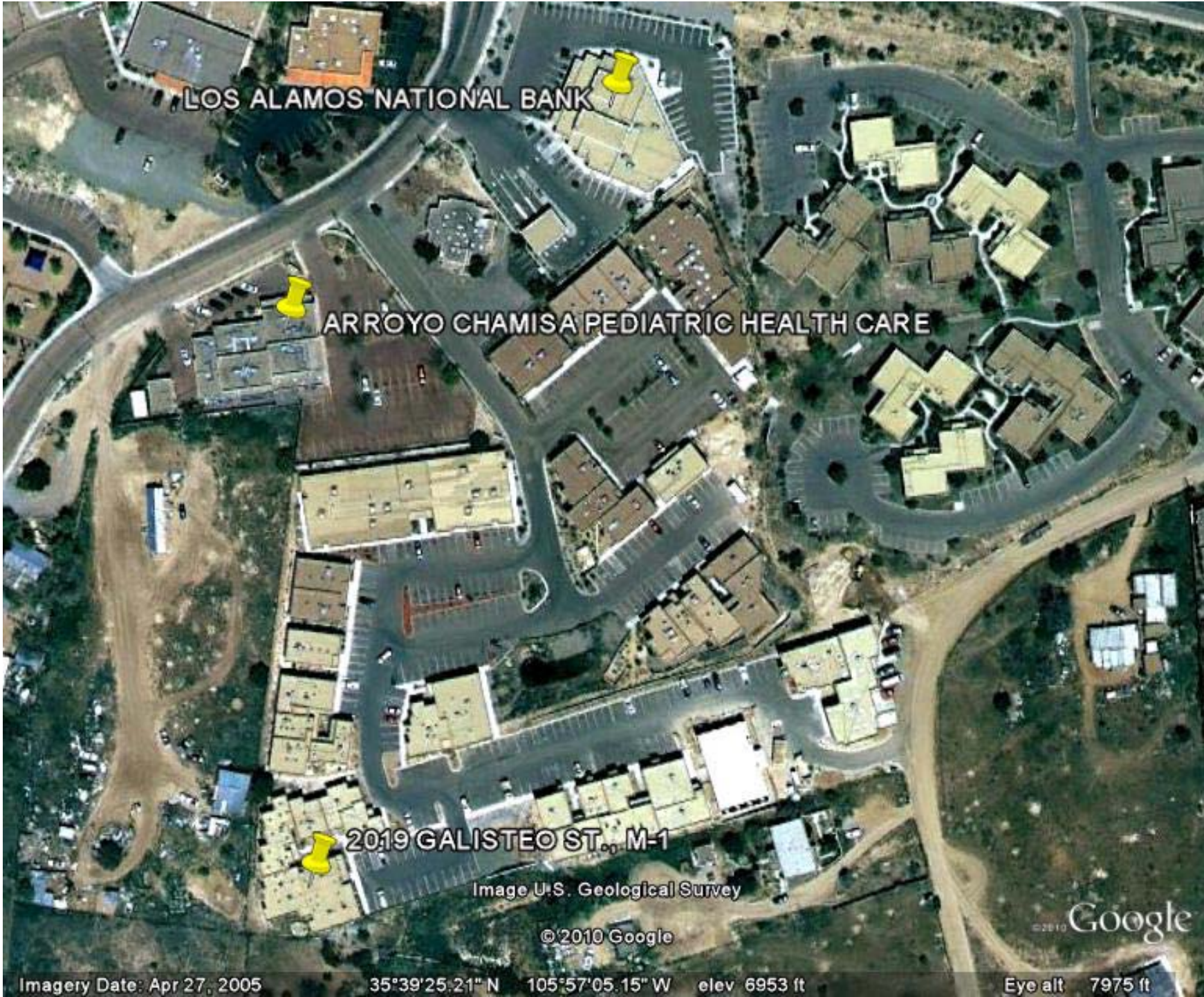
**COMMERCIAL PROPERTIES, INC.
JAMES F. WHEELER, CCIM
2019 GALISTEO ST., L-1
SANTA FE, NM 87505
505 988 8081**



Imagery Date: Apr 27, 2005

35°39'25.64" N 105°56'56.69" W elev 6986 ft

Eye alt 10637 ft



LOS ALAMOS NATIONAL BANK

ARROYO CHAMISA PEDIATRIC HEALTH CARE

2019 GALISTEO ST., M-1

Image U.S. Geological Survey

© 2010 Google

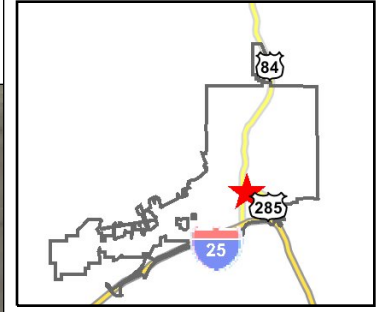
Google

Imagery Date: Apr 27, 2005

35°39'25.21" N 105°57'05.15" W elev 6953 ft

Eye alt 7975 ft

2019 GALISTEO M-1



Legend

- City Limits
- Full Address Labels
- Parcels
- Building Footprint
- Airport Clear Zones
- Santa Fe River
- Major Roads and Highways
- Other Roads and Streets
- 2008 Aerial Photography

0 30 60 ft.

2363 BRINN SCHOOL LN
Map Center: 1728833, 1694175

Scale: 1:516

This map is a user generated static output from an Internet mapping site and is for general reference only. Data layers that appear on this map may or may not be accurate, current, or otherwise reliable. THIS MAP IS NOT TO BE USED FOR NAVIGATION.

