

6820 CERRILLOS RD.

SANTA FE, NM

FOR SALE

\$1,690,000

4.9 Acres of land

15,654 sq.ft. of buildings

Next to Santa Fe Lexus Dealership

Across from the new Super WalMart

FOR LEASE

\$4,250 monthly for 5,000 sq.ft.

&

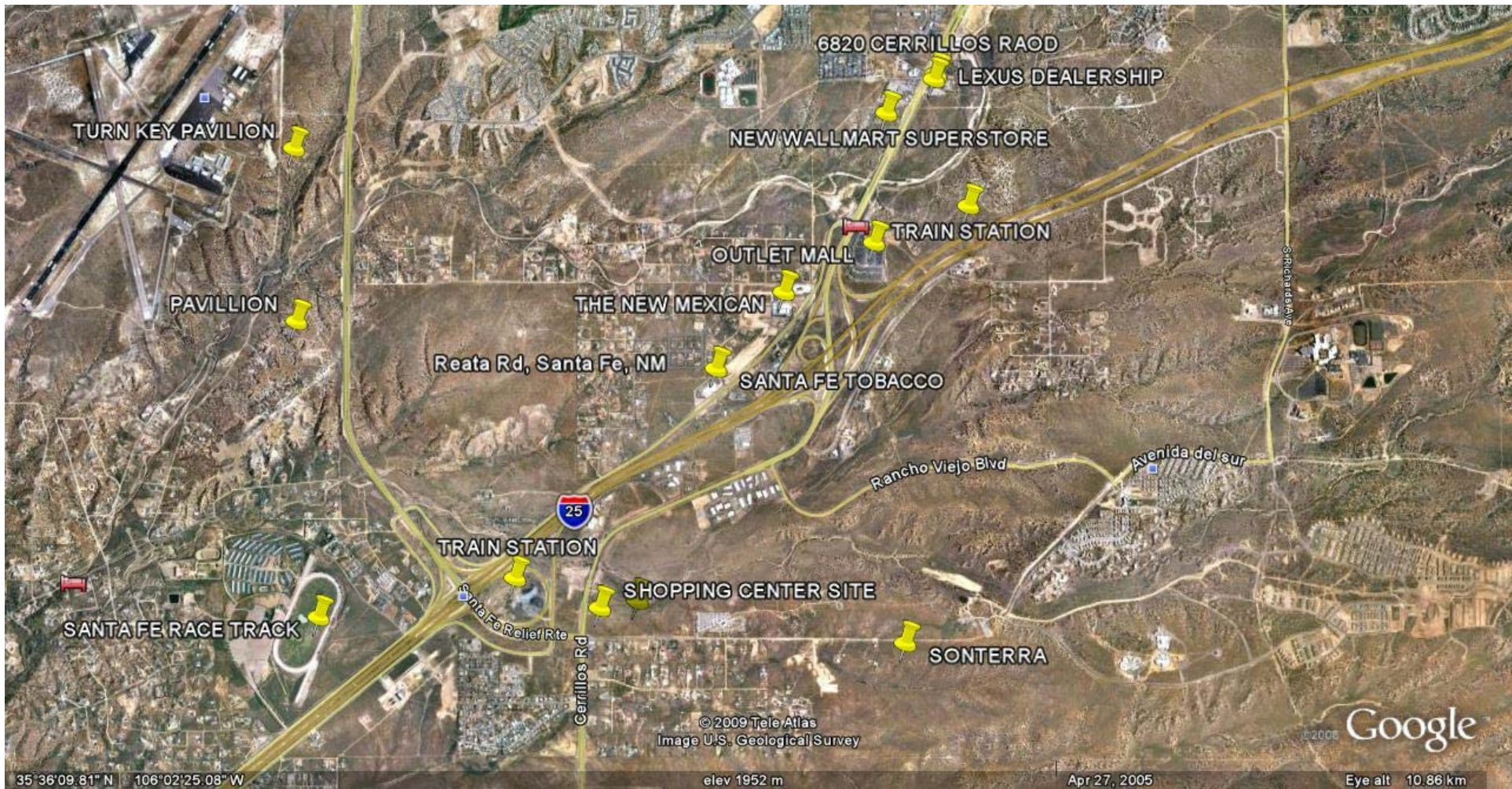
\$1,200 for 1,470 sq.ft. of space

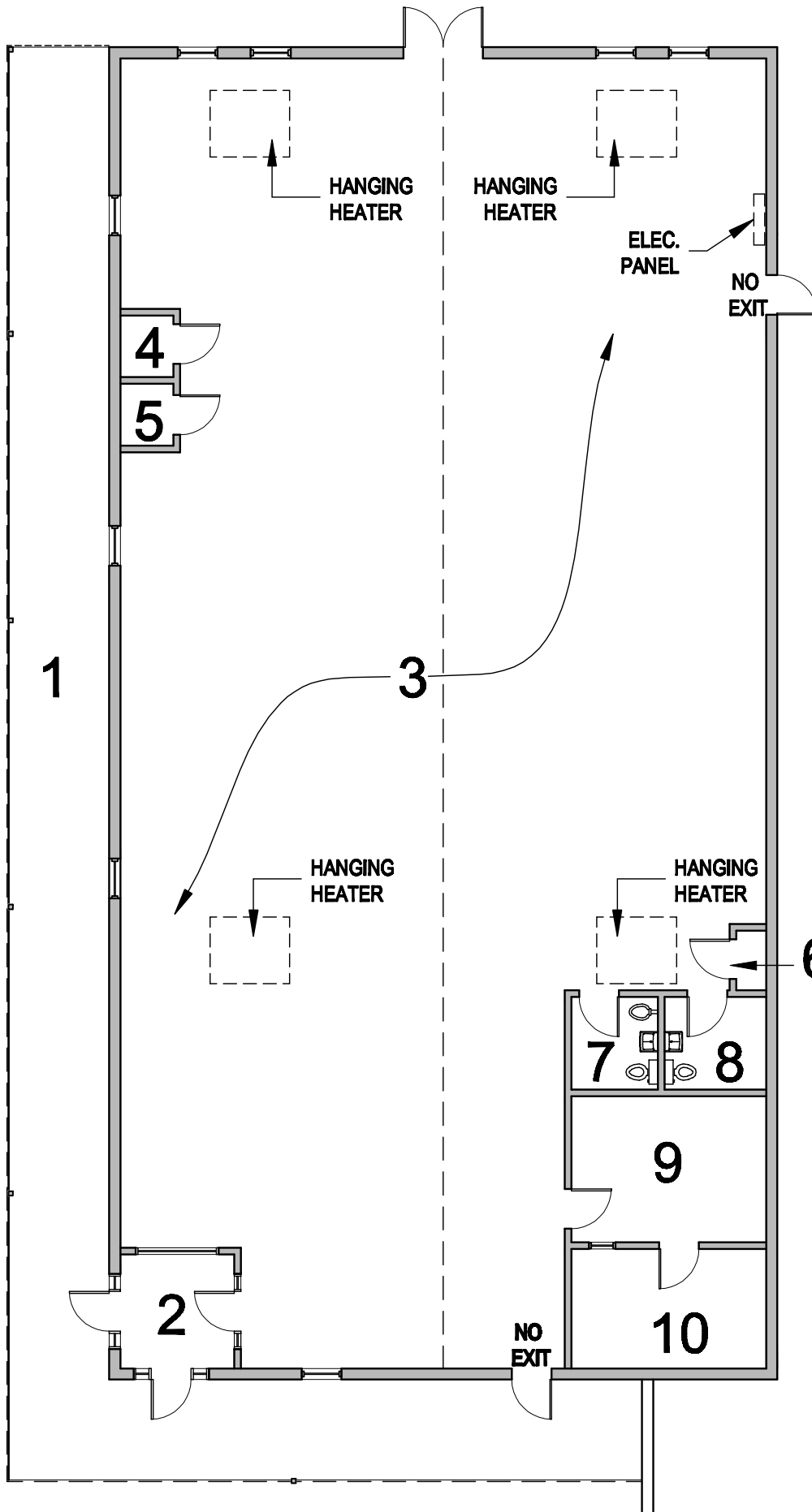
Commercial Properties Inc.

James F. Wheeler, CCIM

(505) 988-8081







- 1. PORTAL - 7'-7" X 106'-0"
- 2. ENTRY - 8'-7" X 8'-7"
- 3. OPEN SPACE - 48'-8" X 96'-9"
- 4. STORAGE - 4'-8" X 4'-8"
- 5. STORAGE - 4'-8" X 4'-8"
- 6. CLOSET - 2'-3" X 4'-6"
- 7. RESTROOM - 6'-6" X 7'-0"
- 8. RESTROOM - 7'-8" X 7'-0"
- 9. OFFICE SPACE - 15'-0" X 11'-0"
- 10. OFFICE SPACE - 15'-0" X 9'-0"

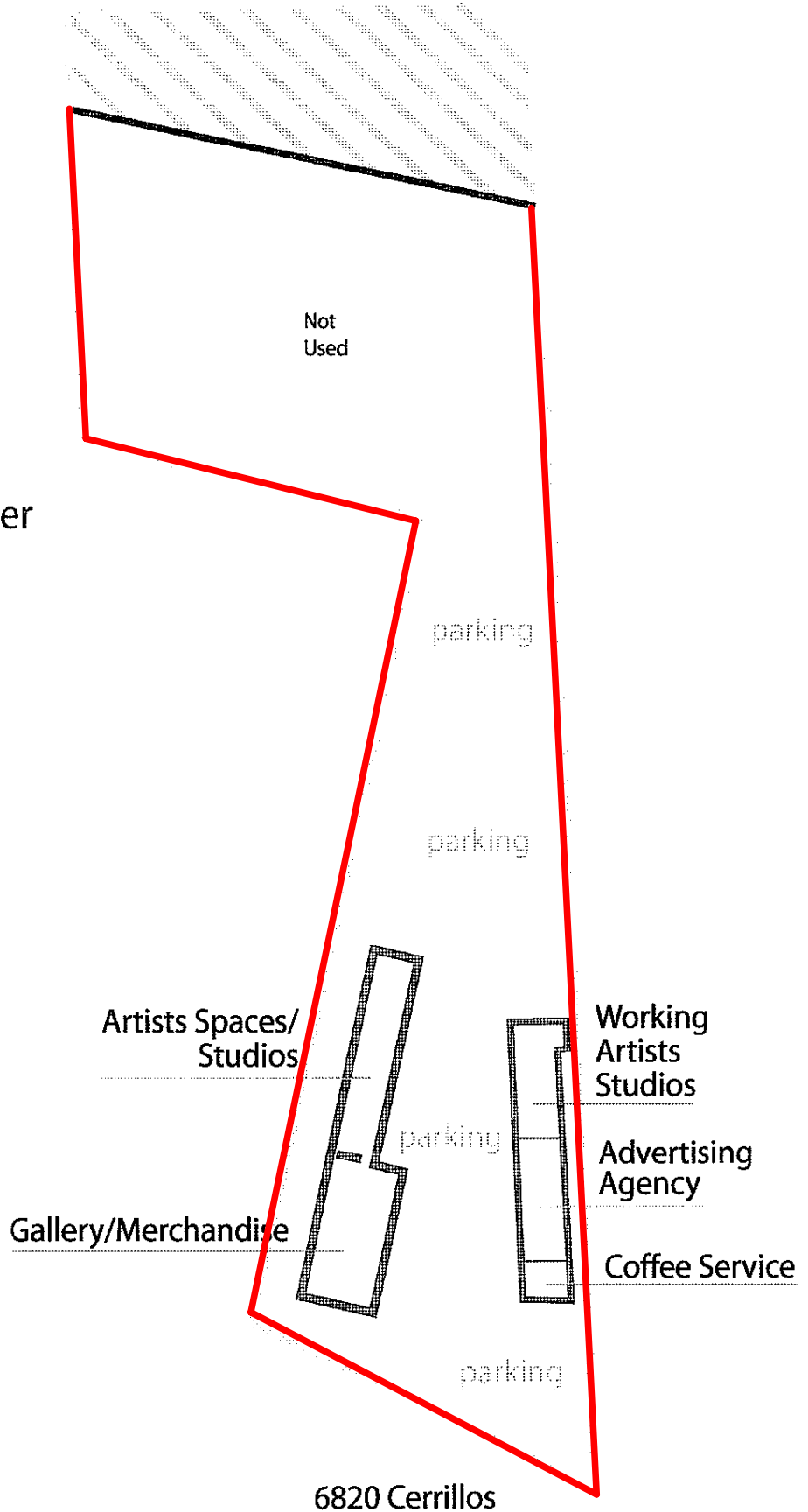
Santa Fe

Arts and Trade Center

Artists & Crafts People, Antiques
Furniture, Jewellery

Site Plan
Working Artists Studios
Artists Spaces
5,000 Sq ft. Gallery/Merchandise
Agency Services
Occupants Coffee Service

Structure & Land
Handicap Access
9 Restrooms
1 Septic Tank
54 Paved Parking Spaces
4 Handicap Parking Spaces
Private Well



UT Way Project No. CERRILLOS ROAD
 200' RIGHT OF WAY
 TPS-001-4(21)48

City of Santa Fe Brass Cap
 H.U.D. #3

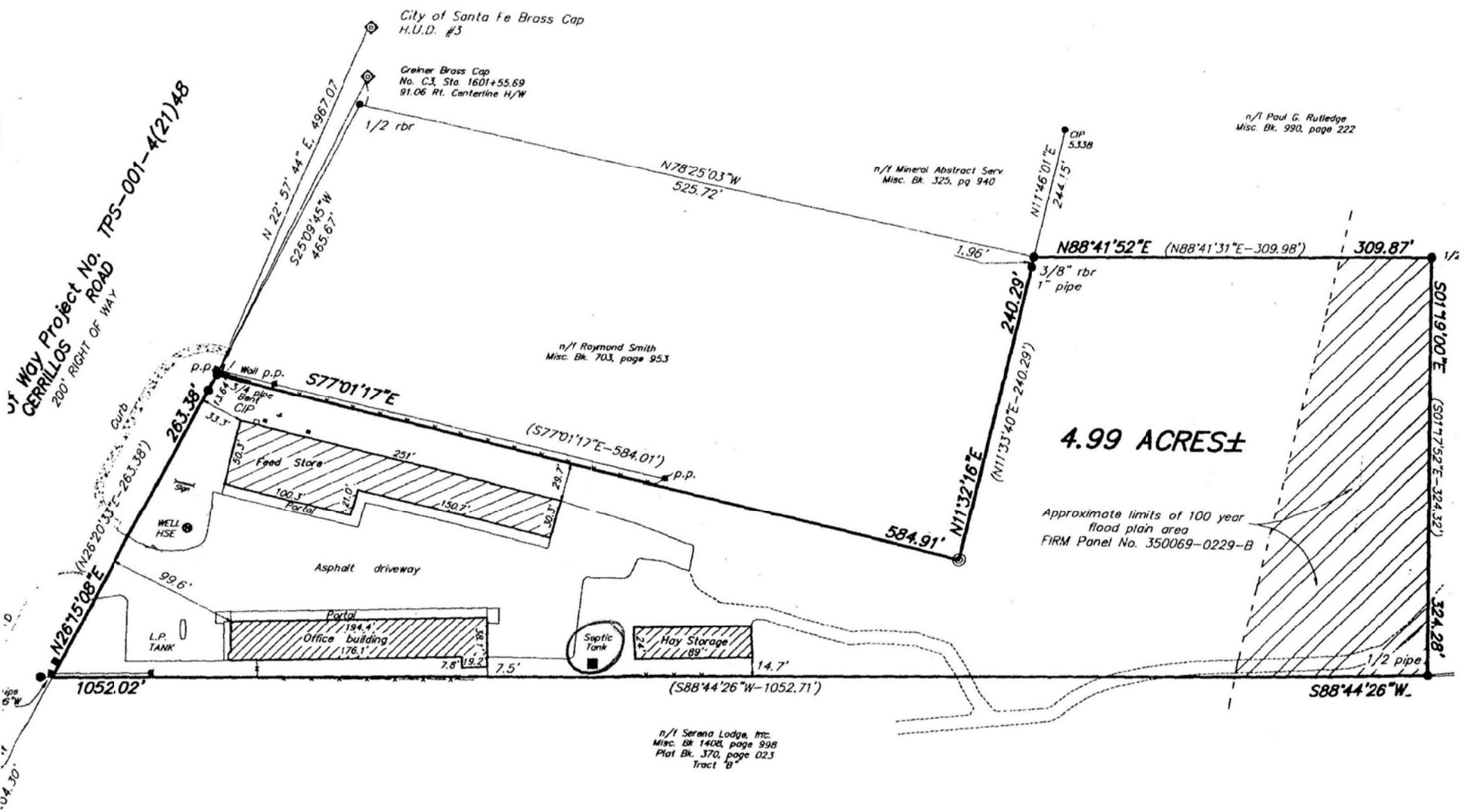
Greiner Brass Cap
 No. C.I. Sta 1601+55.69
 91.06 Rt. Centerline H/W

n/l Paul G. Rutledge
 Misc. Bk. 990, page 222

n/l Mineral Abstract Serv
 Misc. Bk. 325, pg 940

n/l Raymond Smith
 Misc. Bk. 703, page 953

n/l Serena Lodge, Inc.
 Misc. Bk 1408, page 998
 Plat Bk. 370, page 023
 Tract "B"



4.99 ACRES±

Approximate limits of 100 year
 flood plain area
 FIRM Panel No. 350069-0229-B

COUNTY OF SANTA FE
 STATE OF NEW MEXICO

1074 312⁹⁵

I hereby certify that this instrument was filed for
 record on the 13 day of May A.D.
 1999 at 12:02 o'clock P.m., and was duly
 recorded in Book 413, Page 050 of the
 records of Santa Fe County.

Witness my Hand and Seal of Office

Estimated Square Footage per space

6000
 0200
 CURC
 -
 JLOS
 S
 ↓
 I-25

