

METRO BUSINESS PARK

- 12, 000 SQ.FT.
- 2.49 Acres of land
- office/warehouse
may be split
- expansion possible
- dock & overheads plus
office areas

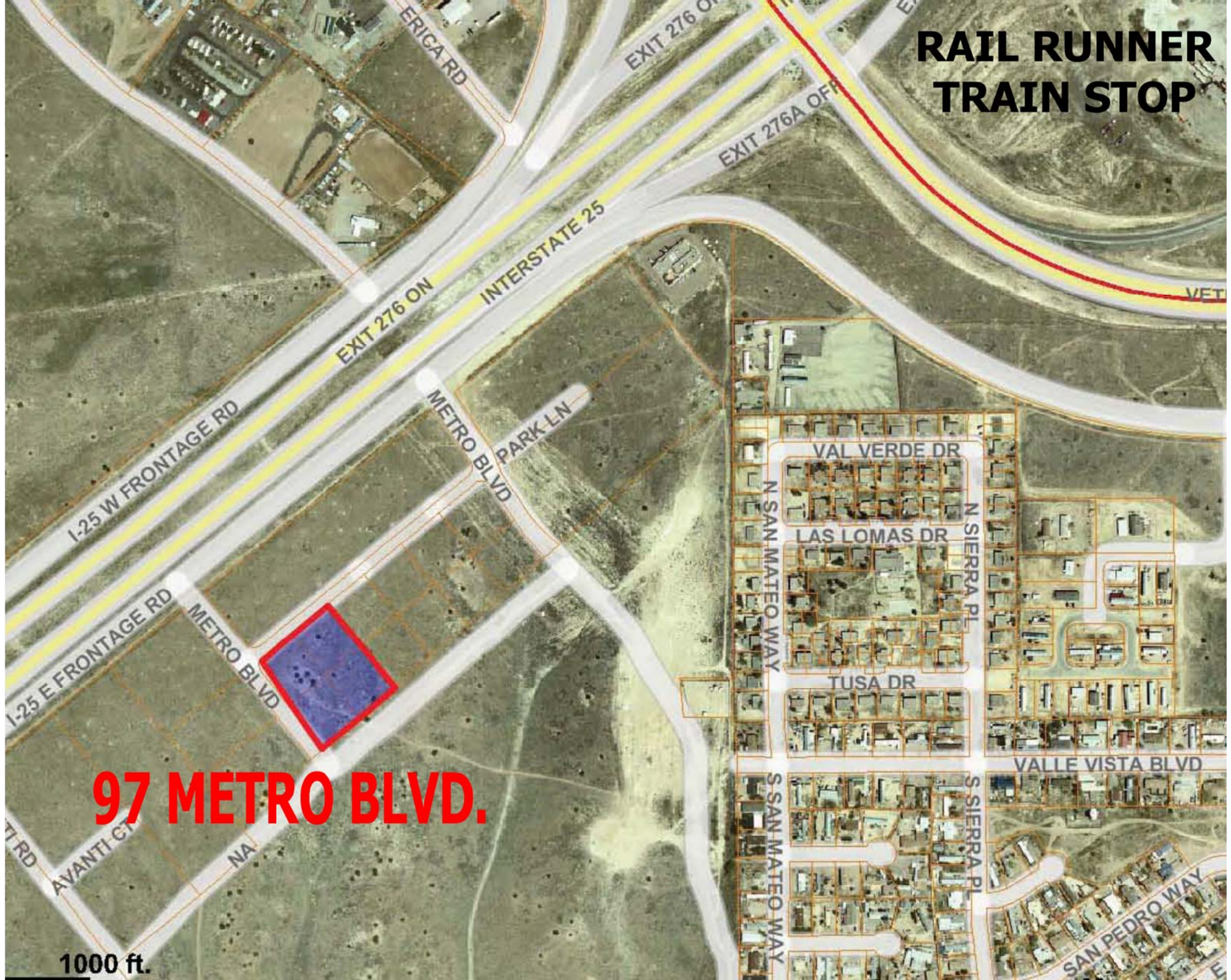


**97 METRO BLVD.
SANTA FE, NM**

**Commercial Properties
Inc.
James F. Wheeler, CCIM
505 988 8081**

**\$2,200,000 or
\$10 a sq.ft. lease**

RAIL RUNNER TRAIN STOP



97 METRO BLVD.

1000 ft.

LOT SPLIT FOR JOSEFO MARTINEZ #16 PARK LANE LOT 5

SANTA FE METRO CENTER SUBDIVISION WITHIN SECTION 26, TOWNSHIP 18 NORTH, RANGE 8 EAST, NEW MEXICO PRINCIPAL MERIDIAN SANTA FE COUNTY, NEW MEXICO

PURPOSE: TO CREATE TWO COMMERCIAL LOTS BY WAY OF LOT SPLIT.

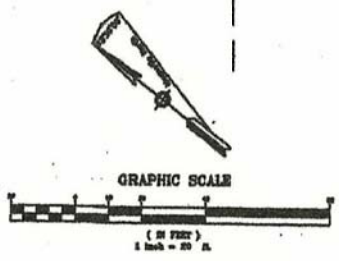
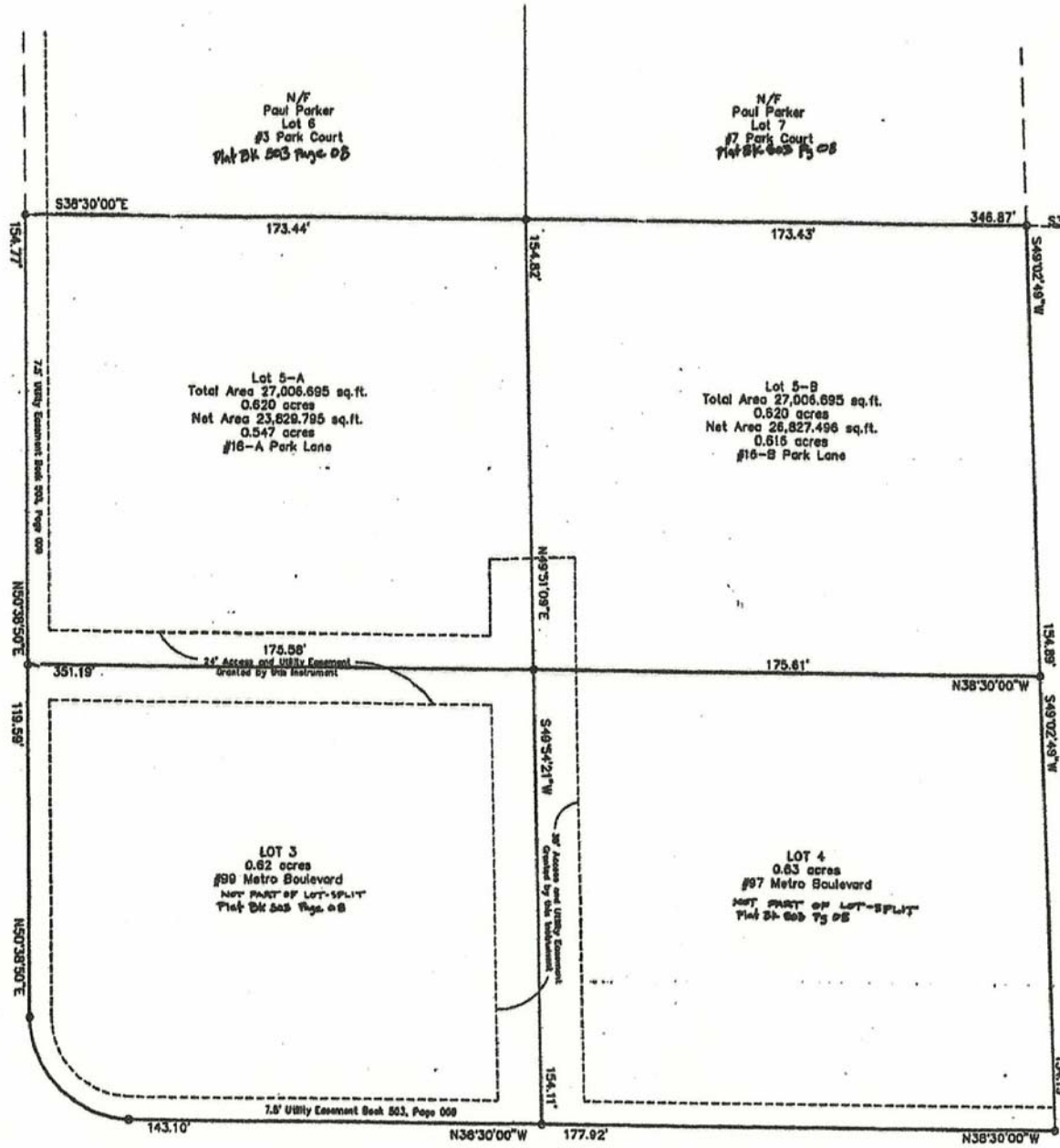
- LEGEND**
- BEOTES POINTS FOUND AND USED
 - BEOTES POINTS SET, NO. 8 REBAR WITH YELLOW CAP MARKED LB #12184
 - BEOTES WIRE FENCE LINE

N/F Tract 1 Conservation Easement Plat Book: 503, Page 009

Park Lane: 72' Utility Easement Book 503, Page 009

72' Utility Easement Plat Book 503, Page 009

N/F Paul Parker Tract 3

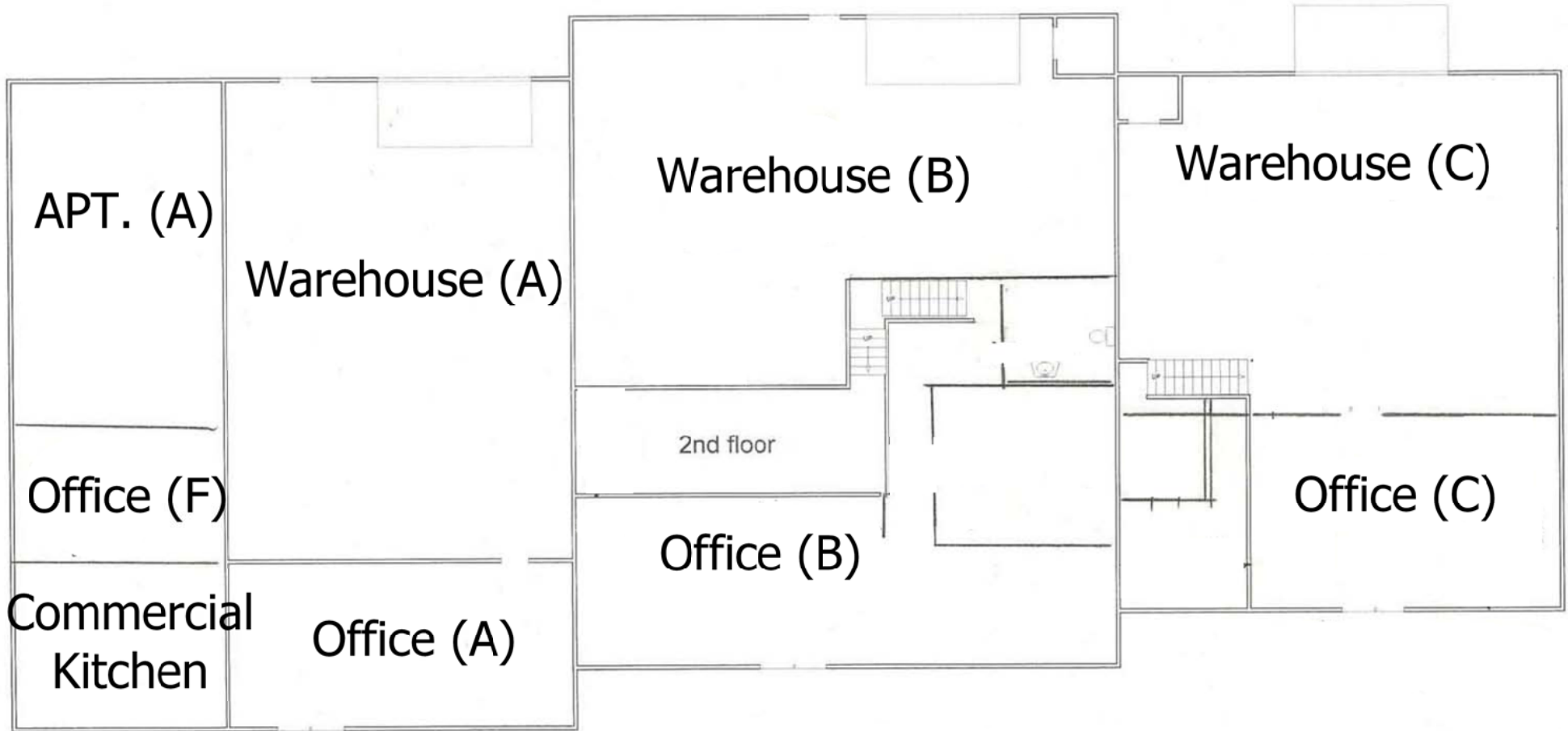


Metro Boulevard of High-Speedway Plat Book 503, Page 009

UPC 1-247-292-143-121

SCALE:	1" = 20'
DRAWN BY:	DV
CHECKED BY:	BB
FIELD WORK:	A-J

INDEXED INFORMATION FOR COUNTY CLERK
 OWNER: JOSEFO MARTINEZ
 LOCATION: #16 PARK LANE, LOT 5
 SANTA FE METRO CENTER SUBD.
 CONTROL NO.



11/01/2011		
LOT	ACRES	SQ.FT.
5A	0.62	27,007
5B	0.62	27,007
3	0.62	27,007
4	0.63	27,443
TOTALS		108,464
ACRES	2.49	