

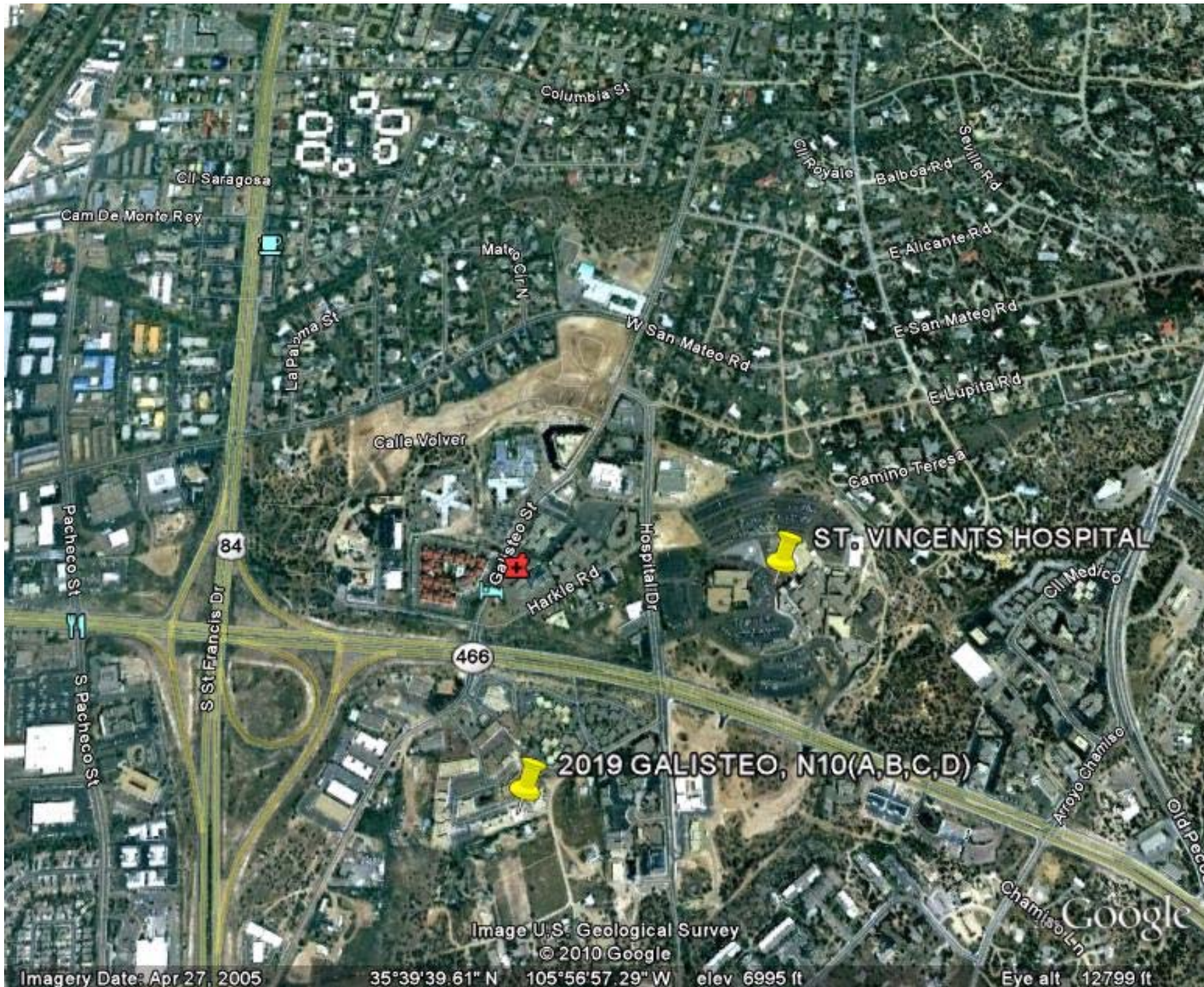


2019 GALISTEO ST., N10,

Santa Fe, NM 87505

- ❖ \$810,000 FOR UNITS A,B,C & D
- ❖ EACH PRICED FROM \$200,000 TO \$205,000
- ❖ SANTA FE CHARM (BEAMS, FIREPLACES, DIAMOND FINISH WALLS AND TILE)
- ❖ WELL MAINTAINED CONDO PROJECT. PROFESSIONALLY MANAGED
- ❖ BUILDING SITS HIGH IN COMPLEX WITH SOME VIEW AND LOTS OF LIGHT!!!
- ❖ CLOSE TO ST. MICHAELS, ST. FRANCIS, DOWNTOWN AND INTERSTATE

James Wheeler
(505) 216-1500
cpi@newmexico.com



Imagery Date: Apr 27, 2005

35°39'39.61" N 105°56'57.29" W elev 6995 ft

Eye alt 12799 ft

Image U.S. Geological Survey
© 2010 Google

Google



2019 GALISTEO, N10(A,B,C,D)

Brunn School
Google

Image U.S. Geological Survey
© 2010 Google

Imagery Date: Apr 27, 2005 35°39'24.17" N 105°57'03.45" W elev 6962 ft Eye alt 7322 ft

08/16/2010					
	N10-A	N10-B	N10-C	N10-D	TOTALS
TERMS	10% DOWN, 20 YEAR AMORT, 6%, 5 YEAR BALLOON	10% DOWN, 20 YEAR AMORT, 6%, 5 YEAR BALLOON	10% DOWN, 20 YEAR AMORT, 6%, 5 YEAR BALLOON	10% DOWN, 20 YEAR AMORT, 6%, 5 YEAR BALLOON	
SQ.FT.	842	853	853	844	
LISTING PRICE	\$200,000.00	\$205,000.00	\$205,000.00	\$200,000.00	\$810,000.00